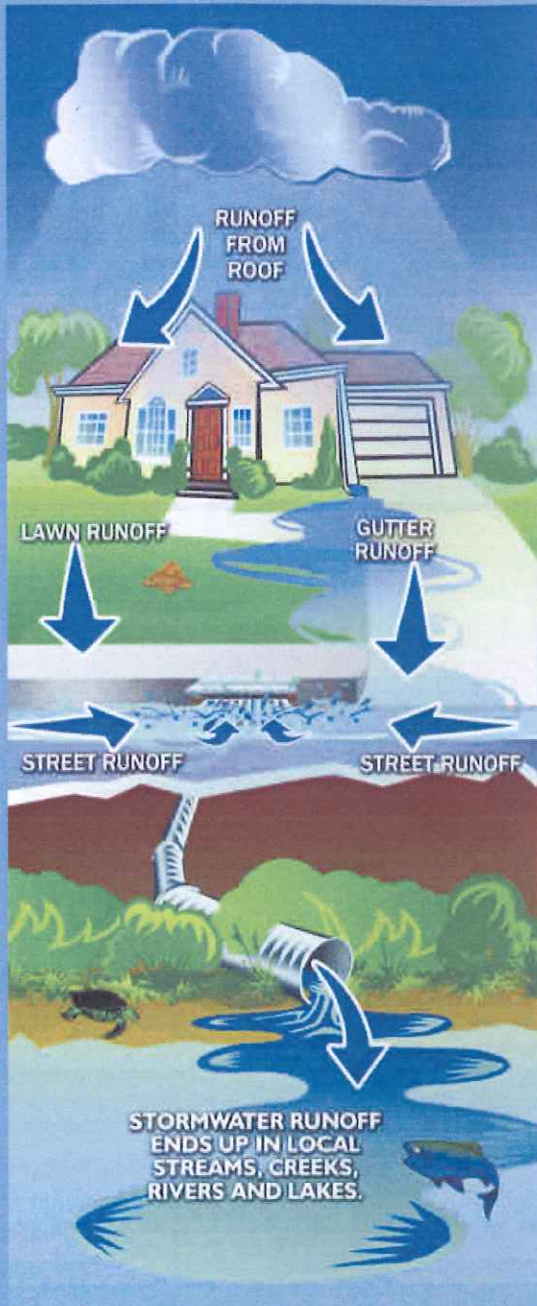


WHAT IS STORMWATER?



MEMBER COMMUNITIES

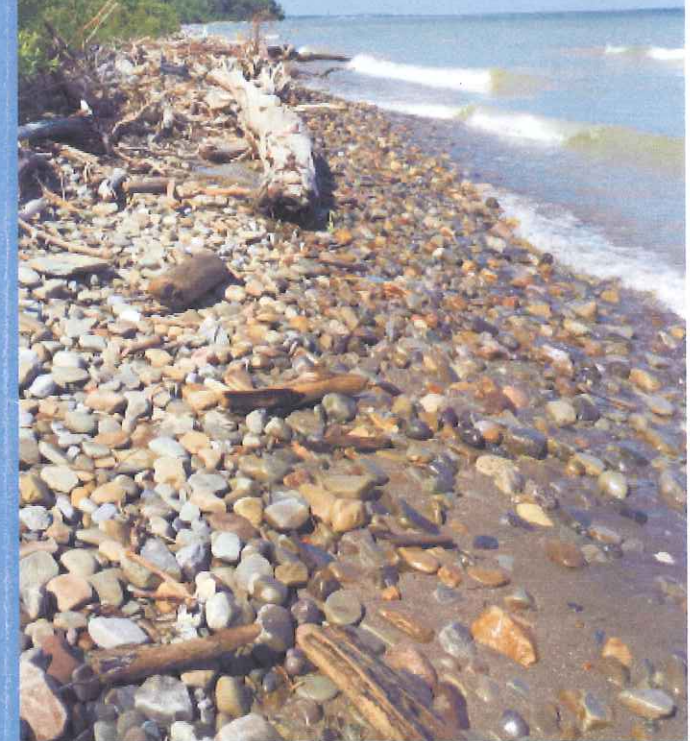
Concord Twp
Eastlake
Fairport Harbor
Grand River
Kirtland
Kirtland Hills
Lakeline
Madison Twp
Madison Village
Mentor on the Lake
Painesville City
Painesville Twp
Perry Village
Timberlake
Willoughby
Willoughby Hills
Willowick

STORMWATER MANAGEMENT



www.lakecountyohio.gov/smd
(440) 350-5900

LAKE COUNTY STORMWATER MANAGEMENT DEPARTMENT





WHY A STORMWATER DEPARTMENT?

Pollution from stormwater is one of the main threats to our lakes and rivers, therefore the U.S. Environmental Protection Agency (EPA) implemented stormwater regulations. The regulations help eliminate and reduce pollutants in stormwater entering the storm sewers and ditches in your neighborhood. The Lake County Stormwater Management Department (LCSMD) assists its member communities with compliance, along with infrastructure improvements, projects, and restoration.

WHY A STORMWATER ASSESSMENT FEE?

A federal mandate requires that certain communities implement a stormwater management program to reduce the amount of pollutants entering natural water bodies. Lake County formed a regional utility to assist communities to comply with the regulations. The fee collected is used to manage the stormwater program, ensure regulatory compliance, and complete infrastructure improvements to reduce flooding and improve water quality.

PARTNER ORGANIZATIONS

LCSMD contracts with these organizations to provide stormwater services:

- Lake County General Health District
- Soil and Water Conservation District
- Chagrin River Watershed Partners



WHAT HAPPENS IN YOUR COMMUNITY?

- Public education, participation and involvement through community events, newsletters and other publications, school programs, and workshops.
- Identifying and eliminating illicit discharges to stormwater. An illicit discharge is anything other than stormwater in the storm sewer system.
- Construction site best management practices to minimize polluted runoff and soil erosion.
- Pollution prevention and good housekeeping at municipal operations.
- Infrastructure improvement projects and repairs.